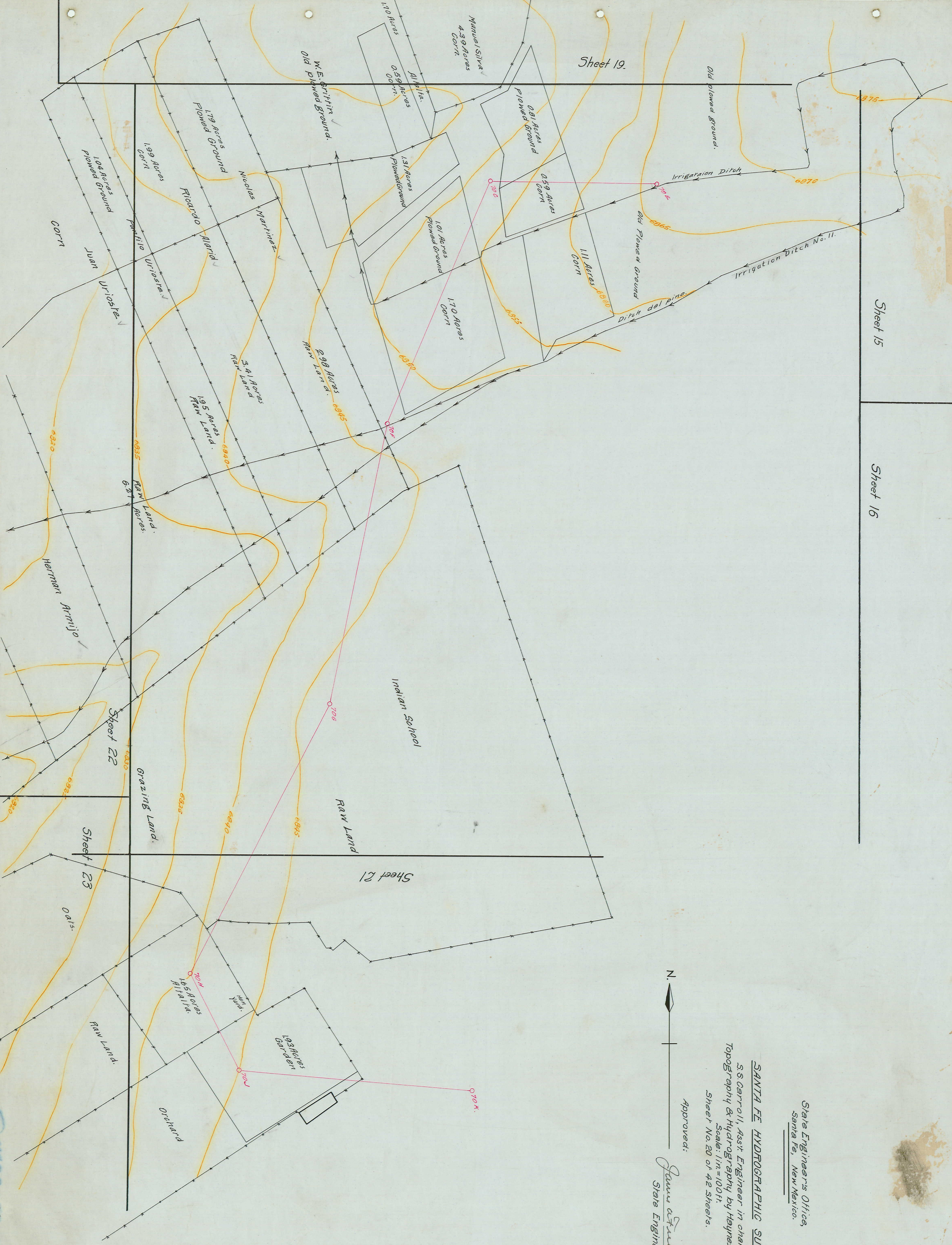


Sheet 19.

Sheet 15

Sheet 16

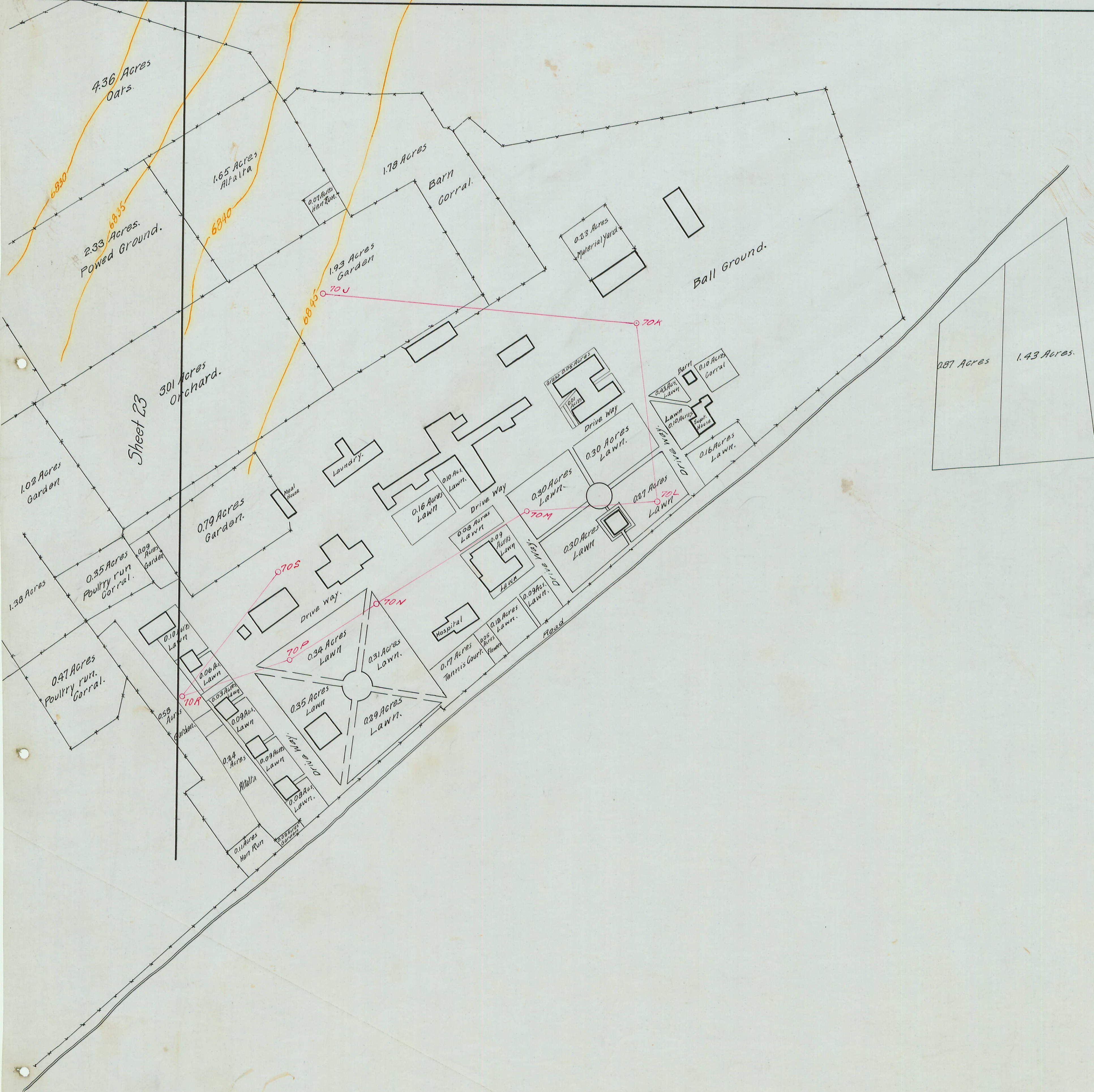


State Engineers Office,
Santa Fe, New Mexico.

SANTA FE HYDROGRAPHIC SURVEY
S.S. Carroll, Asst. Engineer in charge,
Topography & Hydrography by Haynes Howell,
Scale: 1 in. = 100 ft.
Sheet No. 20 of 42 sheets.

Approved: *Stuart Finckel*
State Engineer





State Engineer's Office,
Santa Fe, New Mexico.

SANTA FE HYDROGRAPHIC SURVEY.
S.S. Carroll, Ass't. Engineer in charge,
Topography & Hydrography by Haynes Howell,
Scale: 1 in = 100 ft.
Sheet No. 21 of 42 Sheets.

Approved:
James Atwood,
State Engineer.



Santa Fe Hydrographic Survey
 S.S. Carroll, Asst. Engineer in charge
 Topography & Hydrography by Haynes Howell
 Scale: 1 in = 100 ft.
 Sheet No. 22 of 42 Sheets.
 Approved: *N. James O'Connell*
 State Engineer.



Sheet 24

Sheet 23

6805

6830

6810

6790

6775

6770

6820

6900

6795

6780

6785

6785

6790

6810

6815

6825

6830

6835

6840

6845

6850

6855

6860

6805

6830

6810

6790

6775

6770

6820

6900

6795

6780

6785

6785

6790

6810

6815

6825

6830

6835

6840

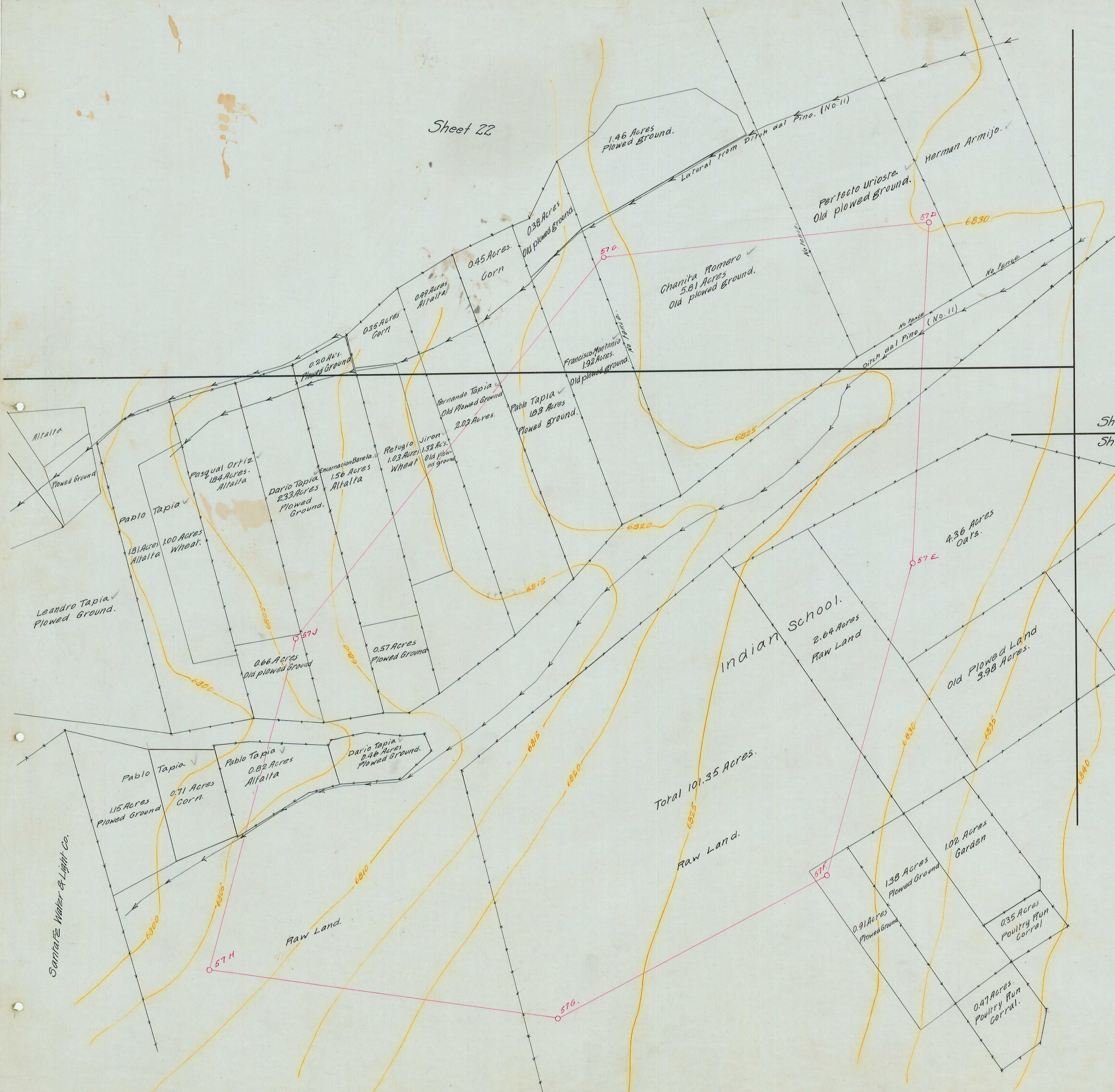
6845

6850

6855

6860

Sheet 22

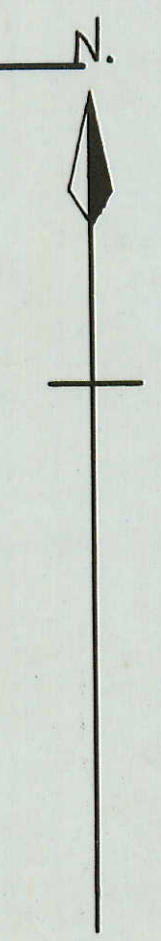


State Engineer's Office,
Santa Fe, New Mexico.

SANTA FE HYDROGRAPHIC SURVEY
S.S. Carroll, Asst. Engineer in charge,
Topography & Hydrography by Haynes Howell,
Scale: 1 in. = 100 ft.
Sheet No. 23 of 42 Sheets.

Sheet 20
Sheet 21

Approved:
James A. Funch
State Engineer.



Santuriz Walker & Light Co.



Sheet 22

Sheet 23

Sheet 25

Sheet 26

State Engineer's Office,
Santa Fe, New Mexico.

SANTA FE HYDROGRAPHIC SURVEY

S.S. Carroll, Asst. Engineer in charge,
Topography & Hydrography by Haynes Howell.

Scale: 1 in. = 100 ft.
Sheet No. 24 of 42 Sheets.

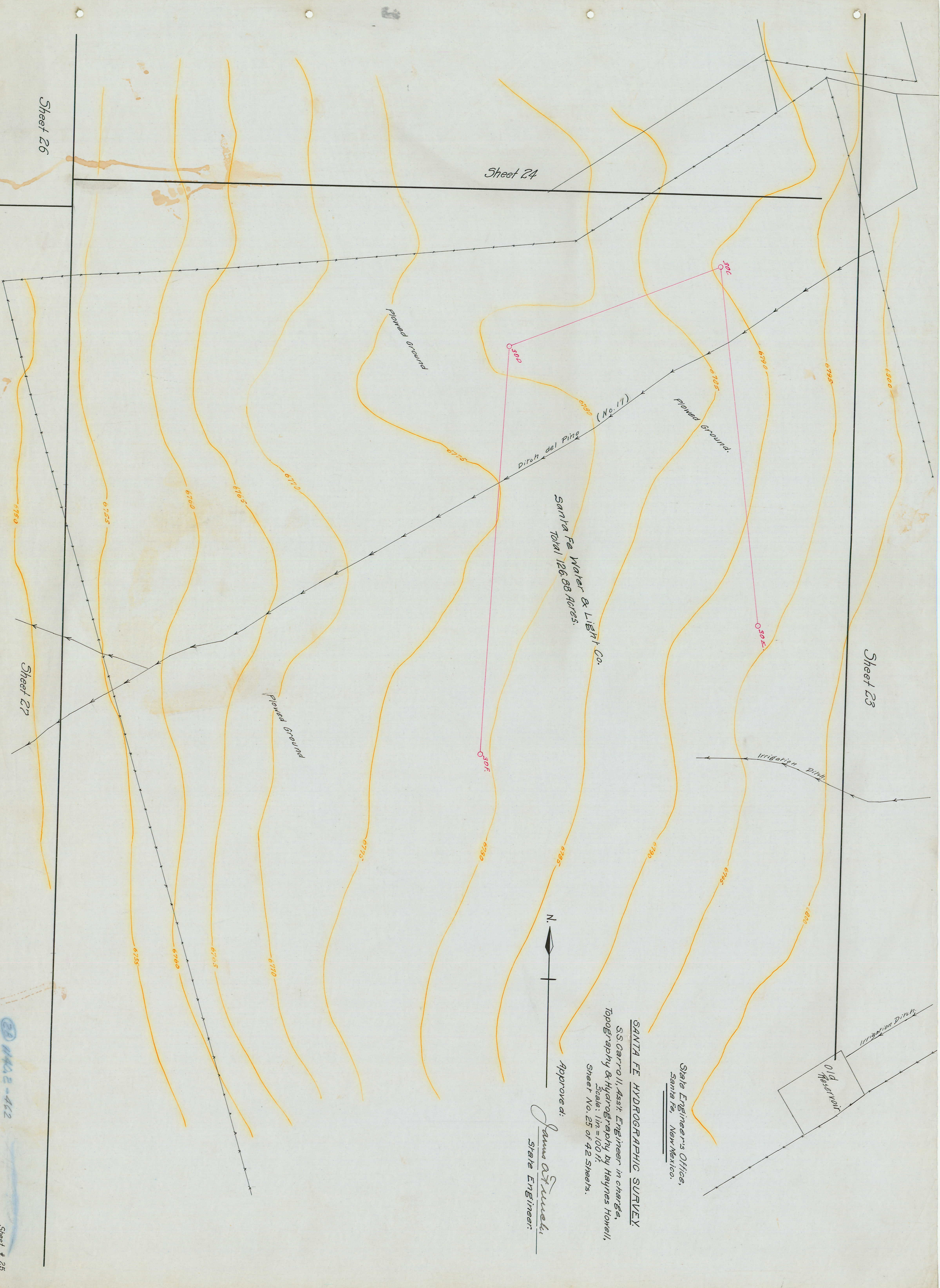
Approved:

James A. Struvel
State Engineer.

Santa Fe Water & Light Co.

011412-462

Sheet # 24



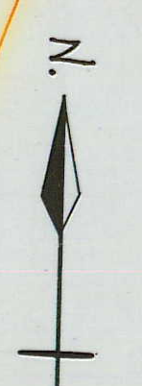
Sheet 24

Sheet 26

Sheet 23

Sheet 27

Santa Fe Water & Light Co.
Total 126.88 Acres.



Approved: *Jama Struelens*
State Engineer.

SANTA FE HYDROGRAPHIC SURVEY
S.S. Carroll, Ass't. Engineer in charge,
Topography & Hydrography by Haynes Howell,
Scale: 1 in. = 100 ft.
Sheet No. 25 of 42 Sheets.

State Engineer's Office,
Santa Fe, New Mexico.

25 H4A2-412

Sheet # 25

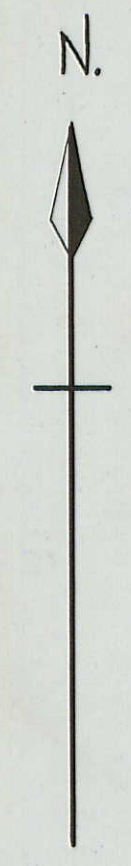
Signal No. 6



State Engineer's Office,
Santa Fe, New Mexico.

SANTA FE HYDROGRAPHIC SURVEY.
S.S. Carroll, Ass't. Engineer in charge
Topography & Hydrography by Haynes Howell
Scale: 1 in. = 100 ft.
Sheet No. 28 of 42 Sheets.

Approved: Jimmie A. Finch.
State Engineer.



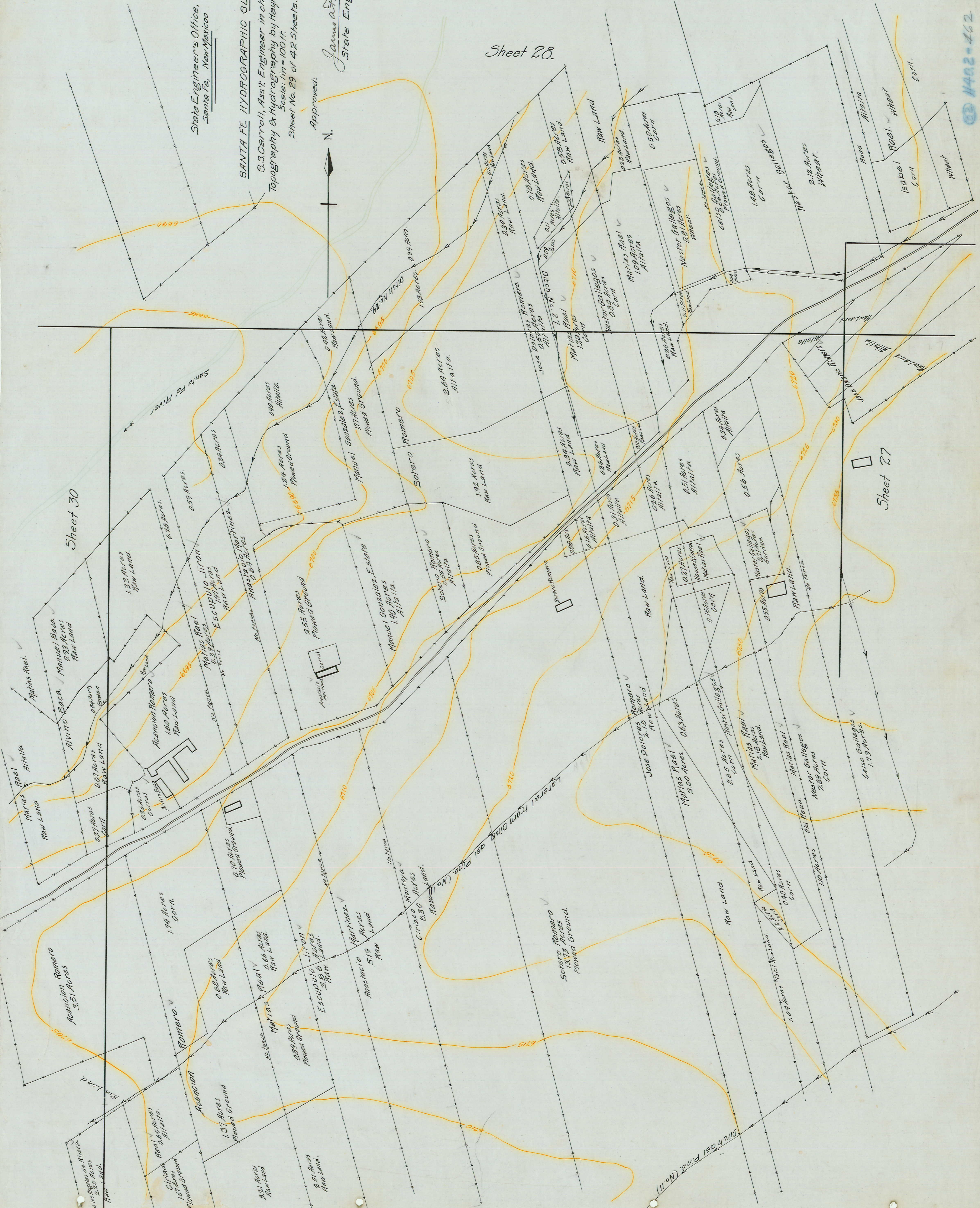
Sheet 26

Sheet 27

Sheet 29

Sheet 30

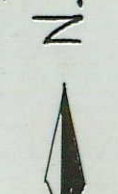
1140.2-462



State Engineer's Office,
Santa Fe, New Mexico

SANTA FE HYDROGRAPHIC SURVEY
 S.S. Carroll, Ass't Engineer in charge
 Topography & Hydrography by Haynes Howell
 Scale: 1 in = 100 ft.
 Sheet No. 29 of 42 Sheets.

Approved:
Jama Atunel
 State Engineer.



Sheet 28

Sheet 27

4402-462

Sheet # 29

